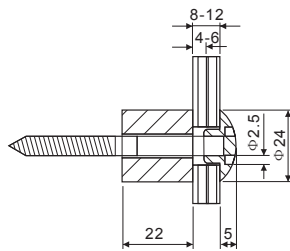
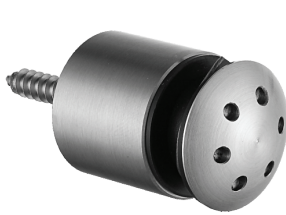


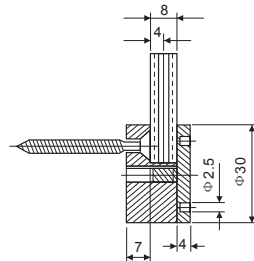
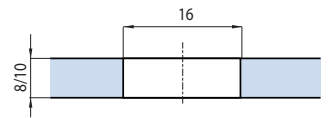
Punti di fissaggio

Point fittings
Punkthalterungen



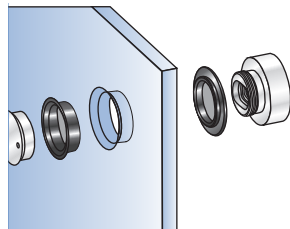
LAM-8330A-4A

Punto di fissaggio Ø 24 mm non regolabile.
Single point fixing Ø 24 mm star domed not adjustable.
Punkthalter Ø 24 mm.



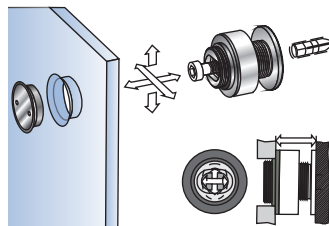
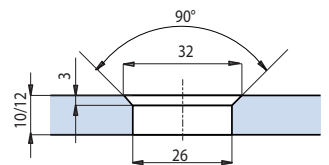
LAM-8330A-5

Punto di fissaggio esterno vetro Ø 30 mm non regolabile.
Single point fixing Ø 30 mm star flat - not adjustable
Punkthalter Ø 30 mm.



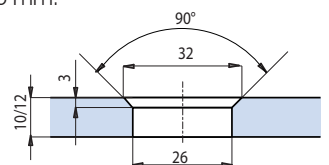
LAM-8300A-9A-DS

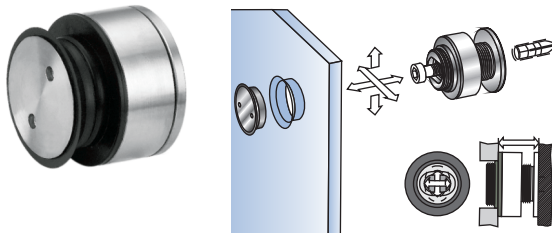
Punto di fissaggio Ø 35 mm, svasato H 6 mm.
Single point fixing Ø 35 mm countersunk not adjustable 6 mm.
Punkthalter Ø 35 mm mit Senkkopf.



LAM-8300A-9C-DS

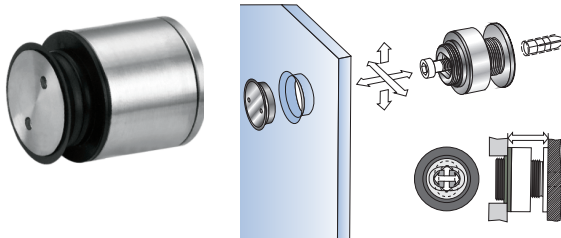
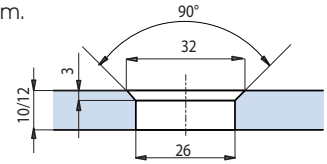
Punto di fissaggio Ø 35 mm, svasato regolabile 10,5 mm - 12,5 mm.
Adjustable single point fixing Ø 35 mm, countersunk - adjusted 10.5 mm, 12.5 mm.
Punkthalter Ø 35 mm mit Senkkopf
Verstellbar 10,5 mm - 12,5 mm.





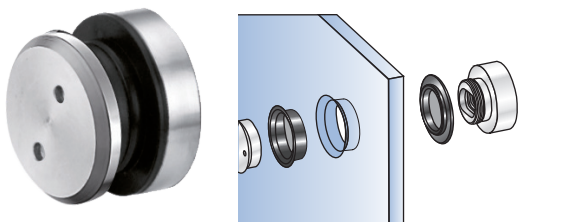
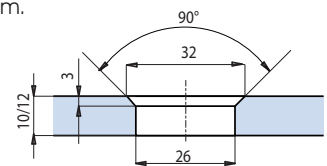
LAM-8300A-9D-DS

Punto di fissaggio Ø 35 mm,
 svasato regolabile 14 mm - 18 mm.
 Adjustable single point fixing
 Ø 35 mm, countersunk
 - adjusted 14 mm , 18 mm.
 Punkthalter Ø 35 mm
 mit Senkkopf
 Verstellbar 14 mm - 18 mm.



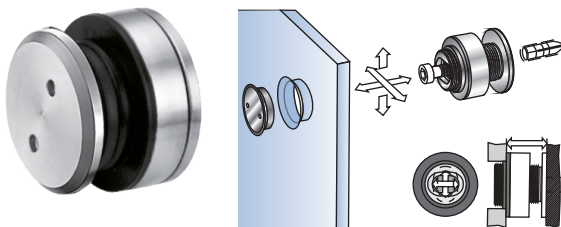
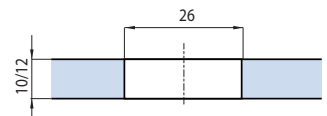
LAM-8300A-9G-DS

Punto di fissaggio Ø 35 mm,
 svasato regolabile 22 mm - 26 mm.
 Adjustable single point fixing
 Ø 35 mm, countersunk
 - adjusted 22 mm , 26.
 Punkthalter Ø 35 mm
 mit Senkkopf
 Verstellbar 22 mm - 26 mm.



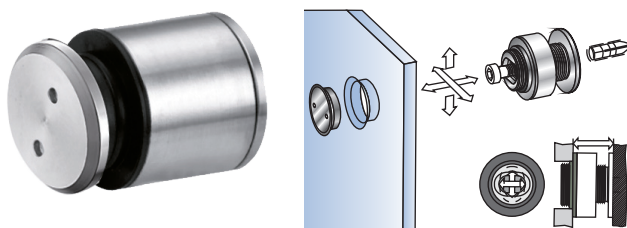
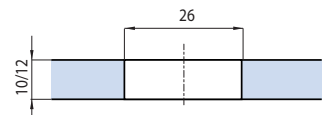
LAM-8300A-9A

Punto di fissaggio Ø 35 mm, H 6 mm.
 Single point fixing Ø 35 mm
 not adjustable 6 mm.
 Punkthalter Ø 35 mm.



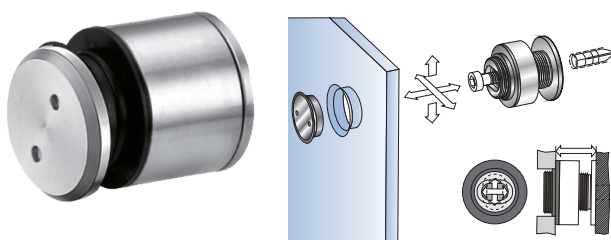
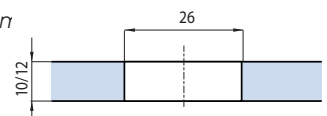
LAM-8300A-9C

Punto di fissaggio Ø 35 mm,
 regolabile 10,5 mm - 12,5 mm.
 Adjustable single point fixing Ø 35 mm
 adjusted 10.5 mm , 12.5 mm.
 Punkthalter Ø 35 mm
 Verstellbar 10,5 mm - 12,5 mm.



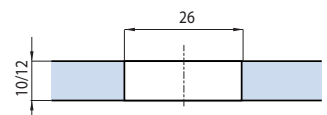
LAM-8300A-9E

Punto di fissaggio Ø 35 mm,
 regolabile 14 mm - 18 mm.
 Adjustable single point fixing
 Ø 35 mm adjusted 14 mm , 18 mm
 Punkthalter Ø 35 mm
 Verstellbar 14 mm - 18 mm.



LAM-8300A-9G

Punto di fissaggio Ø 35 mm,
 regolabile 18 mm - 22 mm.
 Adjustable single point fixing Ø 35 mm
 adjusted 18 mm , 22 mm.
 Punkthalter Ø 35 mm
 Verstellbar 18 mm - 22 mm.



Punti di fissaggio

Point fittings
Punkthalterungen

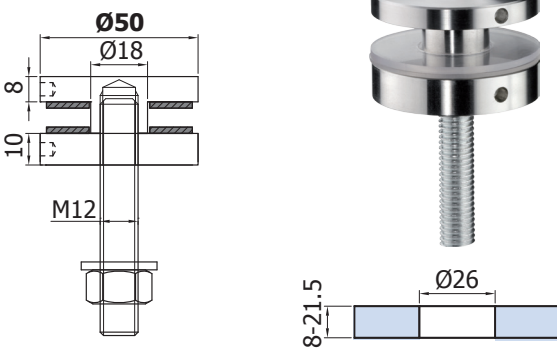


PUNTI DI FISSAGGIO CON TAPPO PIANO Ø 50

Point fittings Ø 50 mm.
Punkthalter Ø 50 mm.
Materiale - Material: Inox AISI 304
Portata - Load capacity - Tragkraft: 1,0 kN*

Consigli per applicazione
dei punti di fissaggio
Example of application
Anwendungsbeispiel

DP-050-10



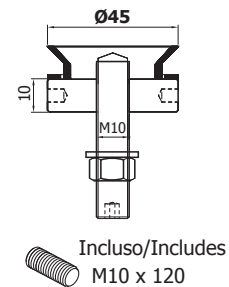
Incluso/Includes
M12x100

PUNTO DI FISSAGGIO Ø 45

Point holder Ø 45 mm.
Punkthalter Ø 45 mm.
Materiale - Material: Inox AISI 304
Portata - Load capacity - Tragkraft: 1,0 kN*

DS-045-10

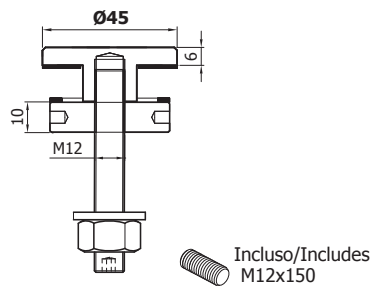
(EX: LG-41AO-FLEX-45)



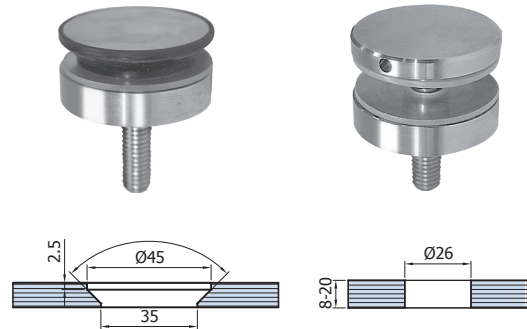
Incluso/Includes
M10 x 120

DP-045-10

(EX: LG-41AL-PUNKT-45)



Incluso/Includes
M12x150



xme 233c-e

PUNTI DI FISSAGGIO CON TAPPO PIANO Ø 40

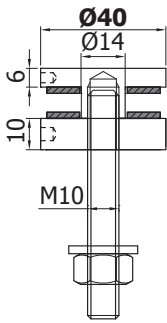
Point fittings Ø 40 mm.

Punkthalter Ø 40 mm.

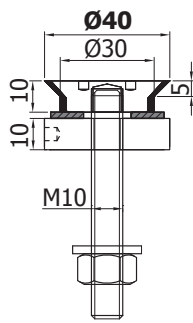
Materiale - Material: Inox AISI 304

Portata - Load capacity - Tragkraft: 1,0 kN*

DP-040-10



DS-040-10



Incluso/Includes
M10x100

PUNTI DI FISSAGGIO Ø 30

Punto di fissaggio Ø 30 mm

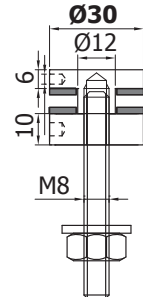
Point fittings Ø 30 mm.

Punkthalter Ø 30 mm.

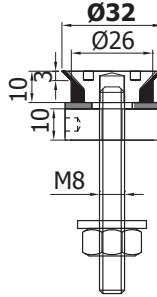
Materiale - Material: Inox AISI 304

Portata - Load capacity - Tragkraft: 1,0 kN*

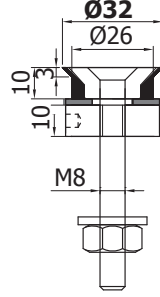
DP-030-10



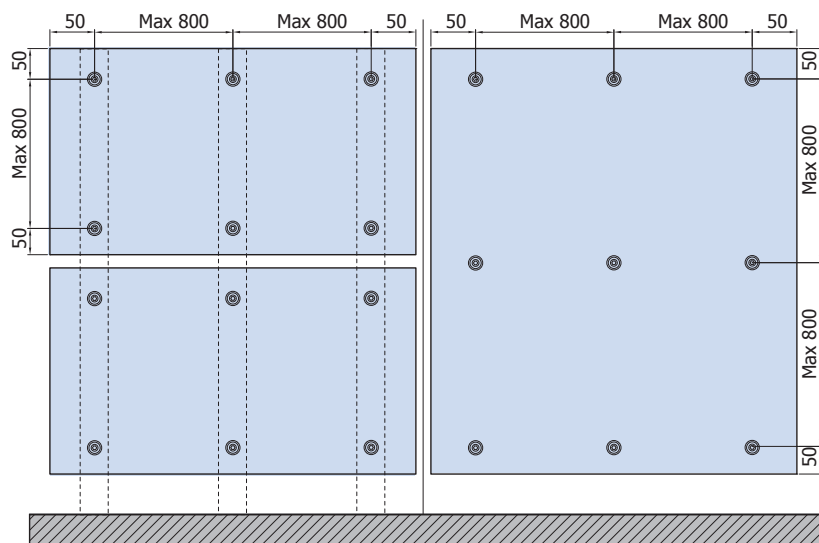
DS-030-10



DSV-030-10



Incluso/Includes
M8x80



Questo disegno è solo
indicativo, l'azienda
non è responsabile
dell'installazione
Indicative drawing,
we are not responsible
for the installation
Zeichnung ohne
Verantwortung

IX = Acciaio inox satinato
Satin stainless steel
Edelstahl matt

* Prima dell'applicazione è necessaria un'analisi strutturale
Before application a structural analysis is necessary
Für die Anwendung muss eine statische Berechnung erfolgen