

# Accessori per porte

Accessories for doors  
Zubehör für Drehtüren

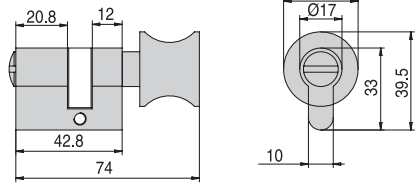
► Price list 1/15 page 165-193



## C-01

Cilindro WC con pomolo per lato serratura  
WC cylinder with knob for lock side  
WC Zylinder mit Knopf auf Schlossseite

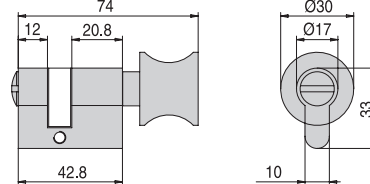
CS - NS - CR - OL



## C-02

Cilindro WC con pomolo per lato battuta  
WC cylinder with knob for rebate side  
WC Zylinder mit Knopf auf Schlossgegensseite

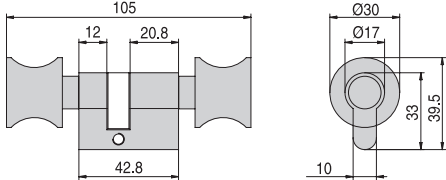
CS - NS - CR - OL



## C-03

Cilindro con doppio pomolo  
Cylinder with double knob  
Zylinder mit Doppelknopf

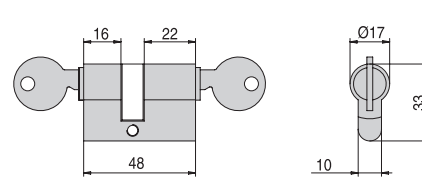
CS - NS - CR - OL



## C-04

Cilindro asimmetrico da 48mm  
Cylinder asymmetrical with length 48mm  
Zylinder unsymmetrisch mit Länge 48mm

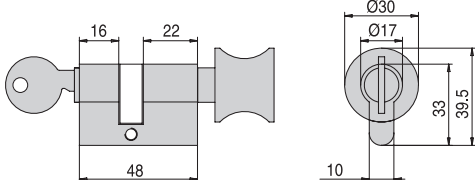
CS - NS - CR - OL



## C-05

Cilindro con pomolo e chiave  
Cylinder with knob and key  
Zylinder mit Knopf und Schlüssel

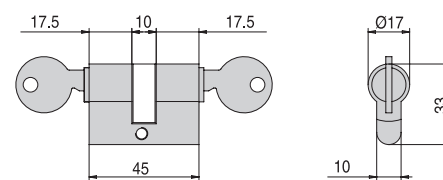
CS - NS - CR



## C-06

Cilindro asimmetrico da 45mm  
Cylinder symmetrical length 45mm  
Zylinder symmetrisch mit Länge 45mm

CS - NS - CR



## C-07

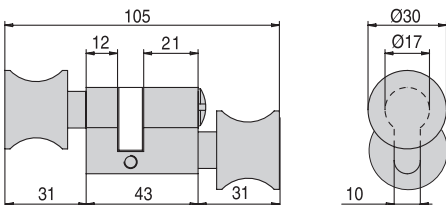
Cilindro WC asimmetrico con 1 pomolo per chiusura porta ed 1 fisso per tirare anta

WC cylinder asymmetrical with double knob

(1 with closing function, 1 fixed)

WC-Zylinder unsymmetrisch mit Doppelknopf einmal mit Schließfunktion, einmal ohne Funktion

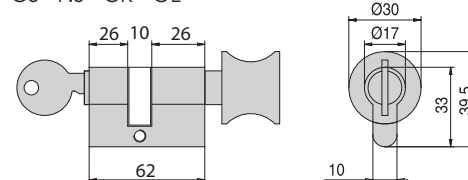
CS - NS - CR - OL



## C-08

Cilindro con pomolo e chiave mm. 62  
Cylinder with knob and key length 62 mm  
Zylinder mit Knopf und Schlüssel Länge 62 mm

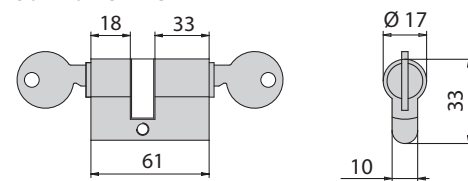
CS - NS - CR - OL



## C-09

Cilindro asimmetrico 48 mm  
Cylinder asymmetrical with length 48 mm  
Zylinder unsymmetrisch mit Länge 48 mm

CS - NS - CR - OL



NS = Nichel satinato  
Satin nickel  
Ähnlich Edelstahl matt  
CS = Cromo satinato  
Satin chrome  
Chrom matt

CR = Cromo lucido  
Polished chrome  
Chrom glänzend

OL = Ottone lucido  
Polished brass  
Messing poliert

CP = Cromo perla  
Chrome perla similar alu  
Chrom perla ähnlich Alu

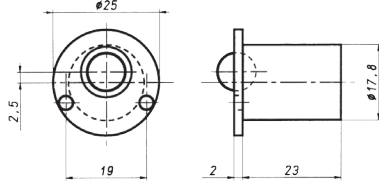


V-003

V-004

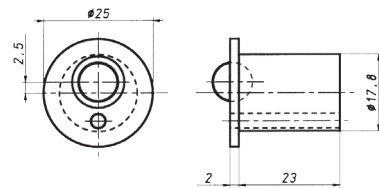
**V-025**

CS



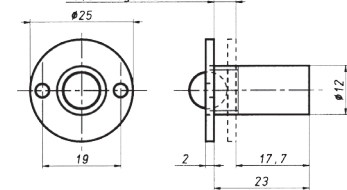
**V-026**

CS



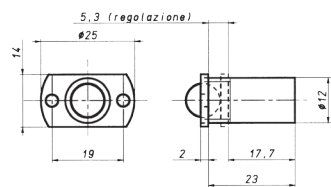
**V-027**

CS



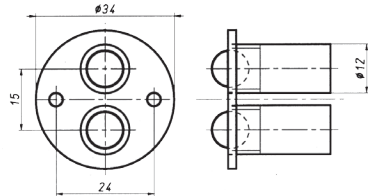
**V-028**

CS



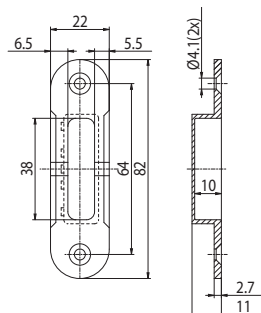
**V-029**

CS



**CP-01**

Contropiastra piatta universale  
Flat strike plate universal  
Schließblech universal  
AN



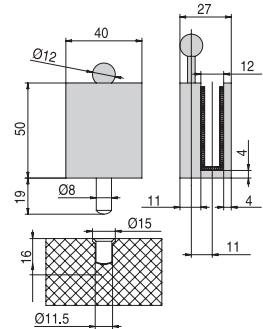
**V-003-8**

Catenacciolo per porta  
doppia vetro 8 mm  
Locking bolt for glass 8 mm  
Feststeller für Glas 8 mm

**V-003-10**

Catenacciolo per porta  
doppia vetro 10 mm  
Locking bolt for glass 10 mm  
Feststeller für Glas 10 mm

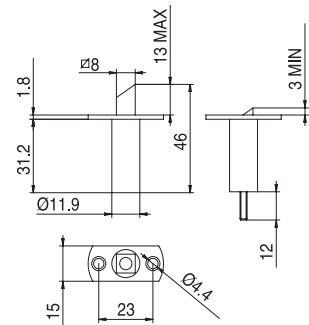
CS - NS - CR - OL - CP



**V-004**

Catenacciolo porta doppia  
Locking bolt for double door  
Türschnapper für 2-flg

CS

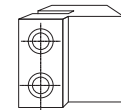
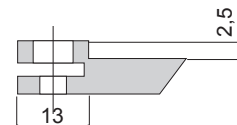


**V-001**

Scrocco fresato 2,5 mm  
per serrature V-200, V-200 ECO,  
V-300, V-400, V-720

Latch 2,5 milled for locks v-200,  
v-200 ECO, V-300, V-400, V-720

Falle abgesetzt Ö-NORM Stahlzarge  
für Schlösser V-200, V-200 ECO, V-300,  
V-400, V-720



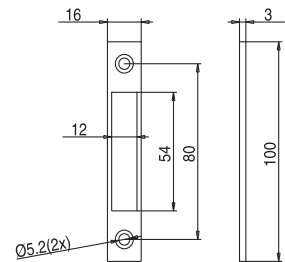
**V-002**

Contropiastra piatta

Flat strike plate

Schliessplatte

CR



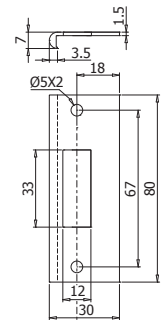
**V-021**

Contropiastra per stipite da 28 mm  
e stipite P-010 per serrature V-200,  
V-400, V-600, V-700 montate  
su vetro 8 mm

Strike plate for rebates of 28 mm  
and P-010 for locks V-200, V-400,  
V-600 V-700 with glass 8 mm

Winkelschließblech für Schlösser V-200,  
V-400, V-600, V-700 mit Falztiefe 28 mm  
oder Türzarge P-010 und Glas 8 mm

CS - NS - CR - OL



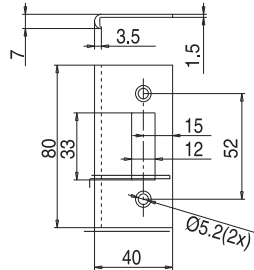
# Accessori per porte

Accessories for doors  
Zubehör für Drehtüren

► Price list 1/15 page 165-193

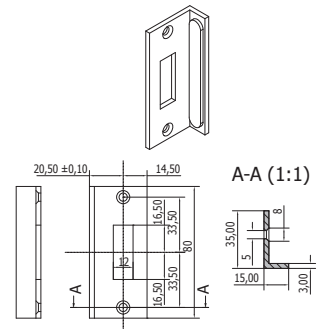
## V-020

Contropiastra per stipite da 40 mm  
Winkelschließblech für Falztiefe  
40 mm  
Winkelschließblech für Falztiefe  
40 mm  
CS - NS - CR - OL



## CP-03

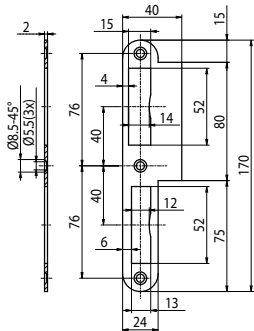
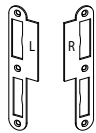
Contropiastra a muro  
per serratura V-800  
Wall strike plate for lock V-800  
Wandschließblech  
mit Anschlag für Schloss V-800  
AN



## CP-02

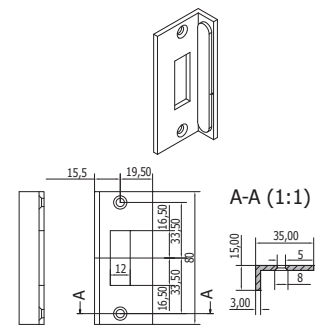
Contropiastra per serratura V-770  
Strike plate for vertical lock  
Schließblech für Schloss V-770  
destra/Right/Rechts  
sinistra/Left/Links

CP-02 R  
CP-02 L



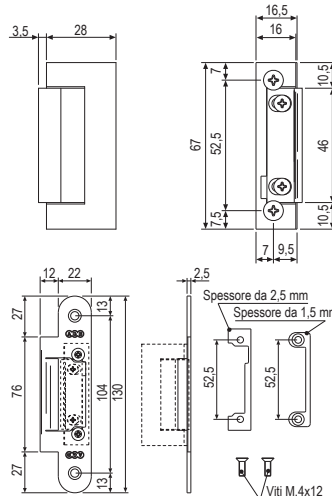
## CP-04

Contropiastra a muro  
per serratura V-750  
Wall strike plate for lock V-750  
Wandschließblech  
mit Anschlag für Schloss V-750  
AN



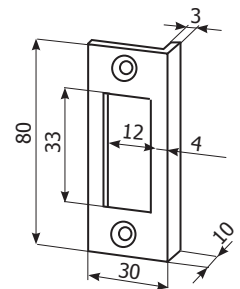
## CP-05

Incontro elettrico  
per serratura V-750 AC/DC  
12 volts  
Electric strike plate for lock  
V-750 AC/DC 12 volts  
Elektrisches Schließblech  
für Schloss V-750 AC/DC  
12 volt  
AN



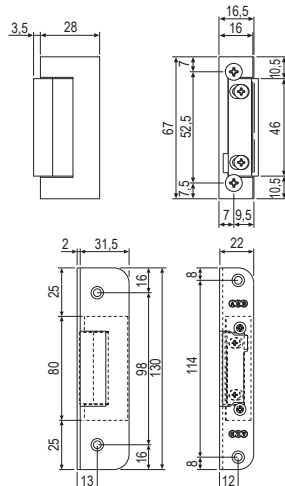
## V-030

Contropiastra per stipite P-010  
per serrature art. V-200, V-400, V-600,  
V-700 montate su vetro da 10 mm.  
STRIKE PLATE for frame P-010  
for locks art. V-200, V-400,  
V-600, V-700 with glass 10 mm  
Winkelschließblech für Schlösser V-200,  
V-400, V-600, V-700 mit Türzargen  
P-010 und Glas 10 mm  
AN



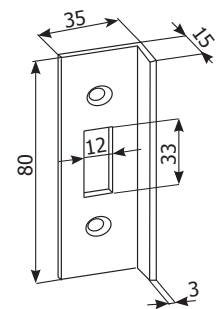
## CP-06

Incontro elettrico ad angolo  
per serratura V-750 AC/DC  
12 volts  
Electric angled strike plate  
for lock V-750 AC/DC 12 volts  
Elektrisches Winkelschließblech  
für Schloss V-750 AC/DC 12 volt  
AN



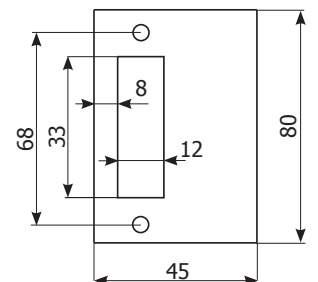
## V-031

Contropiastra per battuta a muro  
per serrature art. V-200,  
V-400, V-600, V-700  
montate su vetro da 10 mm  
Wall strike plate for locks art. V-200,  
V-400, V-600, V-700 with glass 10 mm  
Winkelschließblech wand befestigung  
für Schlösser V-200, V-400, V-600, V-700  
mit Glas 10 mm  
CS



## V-032

Contropiastra piatta per stipiti  
da 48 mm  
Strike plate for rebates 48 mm  
Schließplatte für Falztiefe 48 mm  
CS - CR



NS = Nichel satinato  
Satin nickel  
Ähnlich Edelstahl matt  
CS = Cromo satinato  
Satin chrome  
Chrom matt

CR = Cromo lucido  
Polished chrome  
Chrom glänzend  
IX = Acciaio inox satinato  
Satin stainless steel  
Edelstahl matt

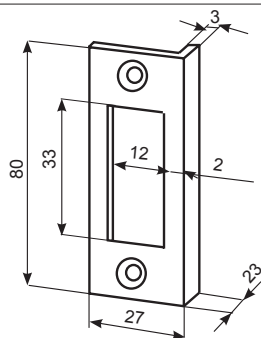
OL = Ottone lucido  
Polished brass  
Messing poliert

AN = Alluminio anodizzato  
Aluminium anodized  
Aluminium Silberfarbig

**V-033**

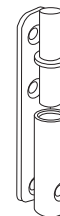
Contropiastra per stipite da 28 mm.  
per serrature V-200, V-400, V-600,  
V-700 montate su vetro da 10 mm  
Strike plate for rebates of 28 mm  
for locks V-200, V-400, V-600, V-700 with  
glass 10 mm.  
Winkelschließblech für Schlösser V-200,  
V-400, V-600, V-700 mit Falztiefe 28  
mm und Glas 10 mm

IX



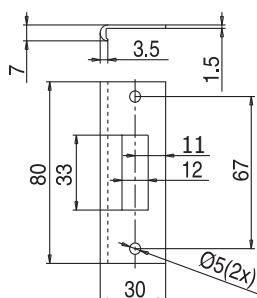
**P-F01**

Perno con piastra fissaggio  
per cerniere V-201, V-201 ECO,  
V-401, V-102  
Pivot with fixing plate  
for hinges V-201, V-201 ECO, V-401,  
V-102  
Aufschraub-rahmenteil für V-201, V-201  
ECO, V-401, V-102 Bänder



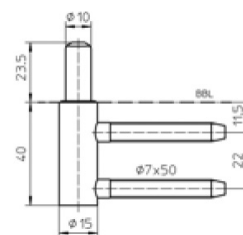
**V-034**

Contropiastra per stipite da 28 mm  
per serrature art. V-500  
montate su vetro da 10 mm  
Strike strike for rebates of 28 mm  
for lock art. V-500 with glass mm. 10  
Winkelschließblech für Schloss V-500  
mit Falztiefe 28 mm und Glas 10 mm  
AN



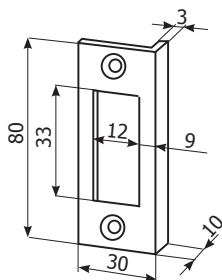
**P-F02**

Cardine per stipiti legno norme  
tedesche DIN-NORM per cerniere  
V-201, V-401, V-201 eco, V-102  
Frame part for rebated doors  
on wooden frame. Ready for use:  
For hinge V-201/V401/V201eco/V-102  
german type - Load capacity: 70 kg  
Rahmenteil für gefälzte türen  
an Holzargen Einsatz:  
Für Glastürband V-201/V401/  
V201eco/V-102 verwendbar, 2teilige  
Bänder - Türgewicht: 70 kg



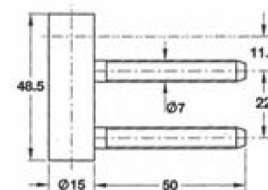
**V-035**

Contropiastra per stipite P-010  
per serratura art. V-500 montate su  
vetro da 10 mm  
Strike plate for frame P-010  
for lock art. V-500 with glass 10 mm  
Winkelschließblech  
für Schloss V-500 mit 10 mm  
Türzarge P-010 und Glas  
AN



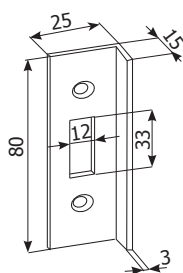
**P-F03**

Cardine per stipiti legno norme  
tedesche DIN-NORM per cerniere  
V-402, V-702  
Frame part for rebated doors  
on wooden frame. Ready for use:  
For hinge V-402/V-702 german type  
Load capacity: 70 kg  
Rahmenteil für gefälzte türen  
an Holzargen. Einsatz: Für Glastürband  
V-402/V702 verwendbar,  
2teilige Bänder - Türgewicht: 70 kg



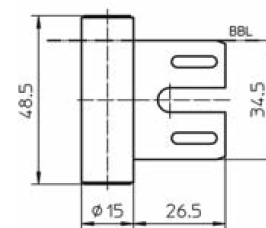
**V-036**

Contropiastra per battuta a muro  
per serratura art. V-500  
Wall strike plate for lock art. V-500  
Wand schließblech  
mit Anschlag für Schloss V-500  
CS - NS - CR - OL



**P-F04**

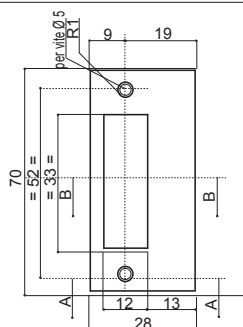
Cardine per stipiti metallici  
norme tedesche DIN-NORM  
per cerniere V-402, V-702  
Frame part for rebated doors  
on steel frame. Ready for use:  
For hinge V-402/V-702 economy,  
german type  
Rahmenteil für gefälzte türen  
an DIN-NORM Stahlzargen  
Einsatz: Für Glastürband  
V-402/V-702 verwendbar,  
3teilige Bänder - Türgewicht: 70 kg



**V-037**

Contropiastra per stipiti con profondità  
40 mm. art. P-030 e P-040  
Flat strike plate for frames P-030 and  
P-040  
Schließblech für Türzargen P-030 und  
P-040

IX



**P-F06**

Cardine per stipiti metallici  
norme austriache per cerniere  
V-402, V-702  
Frame part for rebated doors  
on steel frame. Ready for use:  
For hinge V-402/V-702, german  
type - Load capacity: 70 kg  
Rahmenteil für gefälzte türen  
an Ö-NORM Stahlzargen  
Einsatz: Für Glastürband  
V-402/V-702 verwendbar,  
3teilige Bänder - Türgewicht: 70 kg

