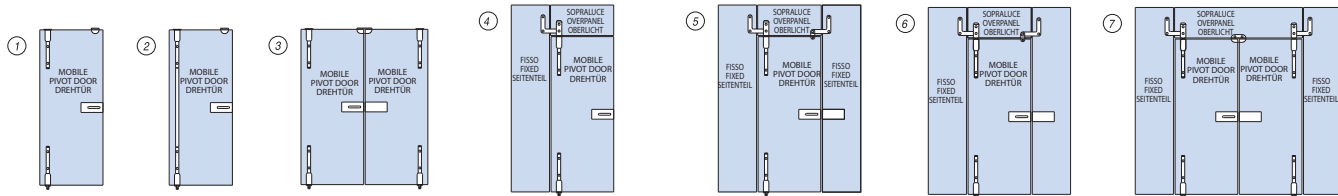


Pivoting System

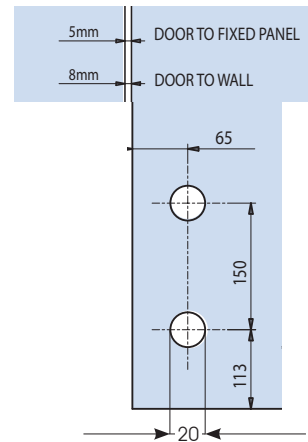
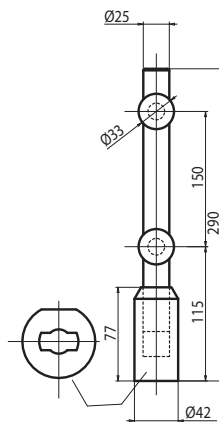
PORTE ESTERNE
HINGES FOR OUTER DOORS





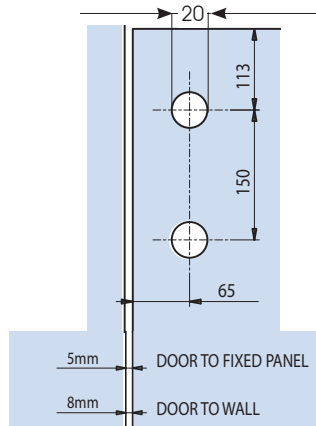
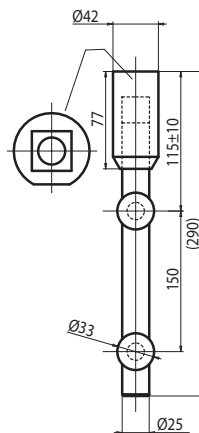
PG1-T

Cerniera inferiore per pompa Tedesca,
Bottom pivot hinge for german closer
 Unteres Pendeltürband für Bodentürschließer mit flachkonischer Achse



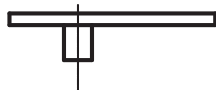
PG-2

Cerniera superiore
Pivoting
 Pivoting Top hinge
 Oberes Band Pivoting



PG10

Perno superiore 15 mm.
Top pivot 15 mm.
 Oberer Zapfen 15 mm.



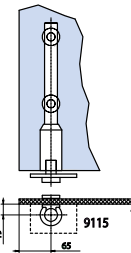
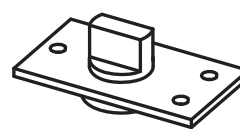
PG11

Perno con fischer 15 mm.
Top centre with plug 15 mm
 Zapfen mit Dübel 15 mm



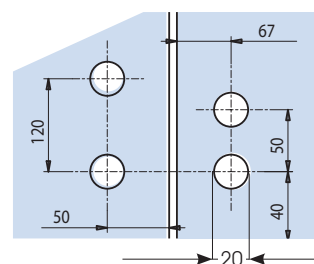
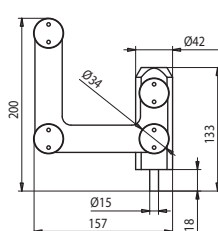
PG - 12

Perno a pavimento
Pivoting con quadro tedesco.
 Floor pivot "Pivoting"
 with German profile spindle.
 Bodenbuchse Pivoting zum
 Einlassen in Mauerwerk
 mit flachkonischer Achse.



PG-5

Attacco Pivoting sopra luce vetro fisso con perno 15 mm
Hinge Pivoting for overpanel - side panel with pivot 15 mm
 Winkeloberlichtbeschlag Pivoting mit Zapfen 15 mm.

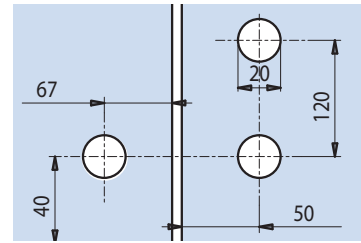
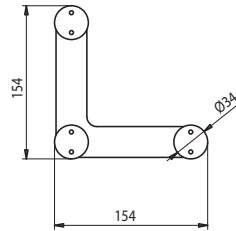


IX = Acciaio inox satinato
 Satin stainless steel
 Edelstahl matt

Pivoting System

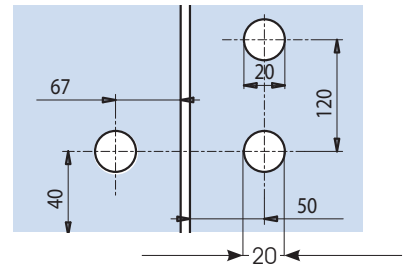
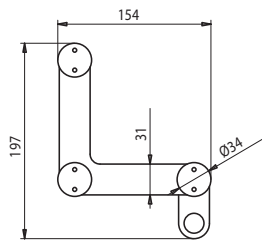
PG-6

Attacco Pivoting sopra luce - vetro fisso.
 Connector Pivoting overpanel - side panel
 Winkeloberlichtbeschlag Pivoting mit Zapfen 15 mm.



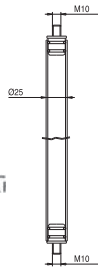
PG-7

Attacco Pivoting sopra luce vetro fisso con battuta
 Connector Pivoting overpanel and side panel with stop
 Oberlicht / Seitenteilverbinder Pivoting mit Anschlag.



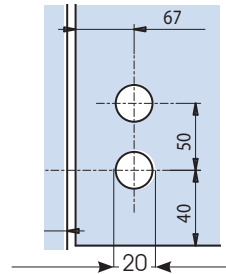
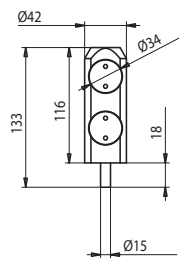
PG-4

Prolunga per cerniere Pivoting
 Extension for hinges Pivoting
 Verlängerung für Bänder Pivoting



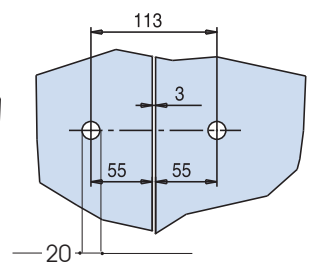
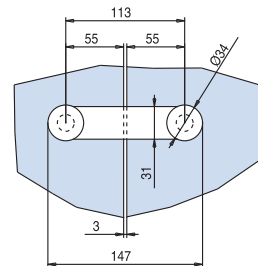
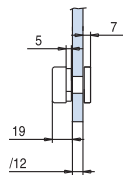
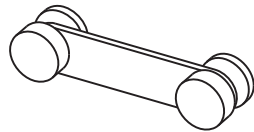
PG-8

Attacco Pivoting sopra luce con perno 15 mm.
 Overpanel pivot with 15 mm pin.
 Oberes Drehlager mit Oberlichtbefestigung mit Zapfen 15 mm.



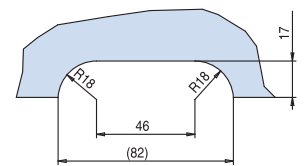
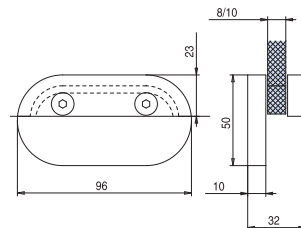
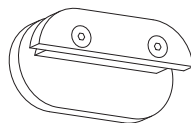
PG-9

Morsetto Pivoting aggancio due vetri
 Connector Pivoting glass-glass
 Verbindungsbeschlag Pivoting Glas-Glas



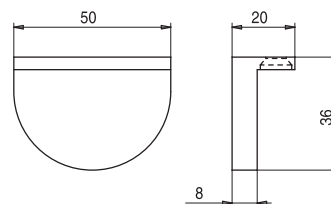
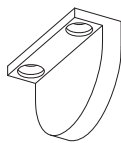
M-13

Battuta per porta doppia con attacco a sopra luce
 Double stop fixed on overpanel
 Doppelanschlag am Oberlicht



M-5

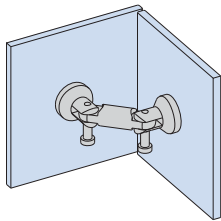
Battuta per porta singola
 Single stop with ceiling installation
 Anschlag für Deckenbefestigung



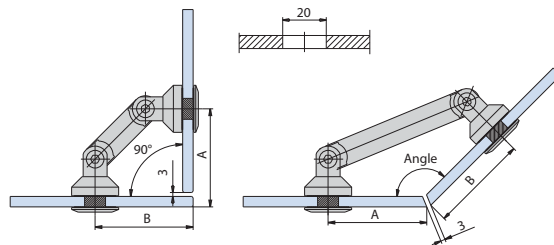
IX = Acciaio inox satinato
 Satin stainless steel
 Edelstahl matt



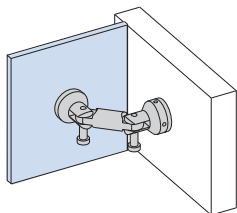
PG-120 F
 Attacco completo
 per vetro/vetro
 Complete connector
 for Glass / Glass
 Komplettbeschlag
 für Glas / Glas



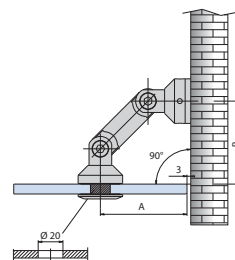
Lunghezza asta di connessione Length connecting rod Länge der Verbindungsachse		
Angolo Angle Winkel	60	
	A	B
90°	80	



PG-139 F
 Attacco completo
 per vetro / muro
 Complete connector
 for Glass / Wall
 Komplettbeschlag
 für Glas / Wand



Lunghezza asta di connessione Length connecting rod Länge der Verbindungsachse		
Angolo Angle Winkel	60	
	A	B
90°	72	67



Asta di connessione
Connecting rod
Verbindungsachsen

PG-3011



PG-3013



PG-3012

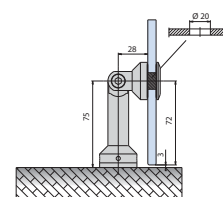
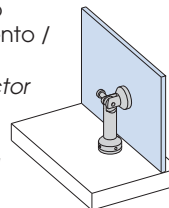


PG-3014

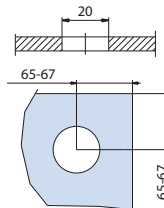
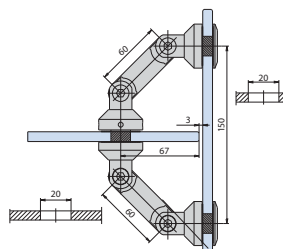
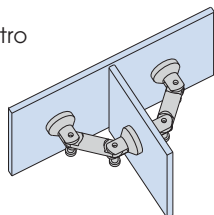


PG-145 F

Attacco completo
per vetro - pavimento /
soffitto
Complete connector
for Glass -
Floor/Ceiling
Komplettbeschlag
für Glas -
Boden / Decke

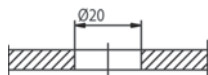
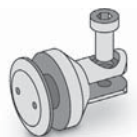


PG-150 F
 Attacco completo a 3 vie per vetro
 Complete connector 3 ways
 for Glass
 Komplettbeschlag für 3 Gläser



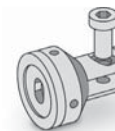
PG-1201 F

Attacco vetro
Pivoting glass clamp
Schwenk - Klemmteil Glas



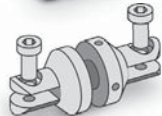
PG-1391

Attacco a muro
Pivoting wall fixing
Schwenk-Klemmteil Wand



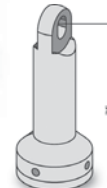
PG-1501

Attacco doppio
Double clamp connector
Doppel Klemmverbindung



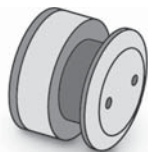
PG-1451

Connettore pavimento/soffitto
Floor/ceiling connector
Boden/Deckenverbindung



PG-20

Fissaggio a punto D. 35 mm.
regolabile
Point fixing D. 35 mm.
adjustable
Punkthalter D. 35 mm.
verstellbar



PG-21

Distanziale multiplo da 8 mm
Distance ring 8 mm.
Distanzhalter 8 mm

